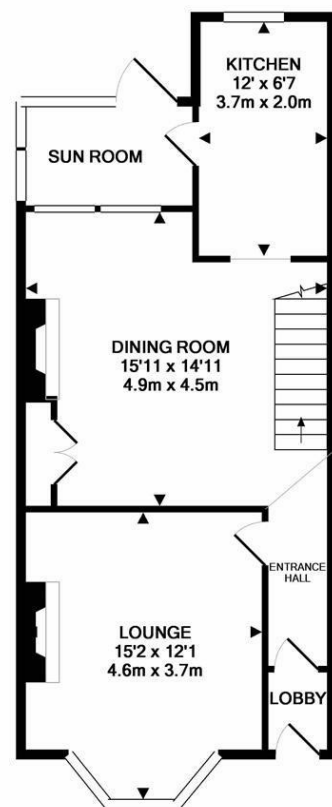




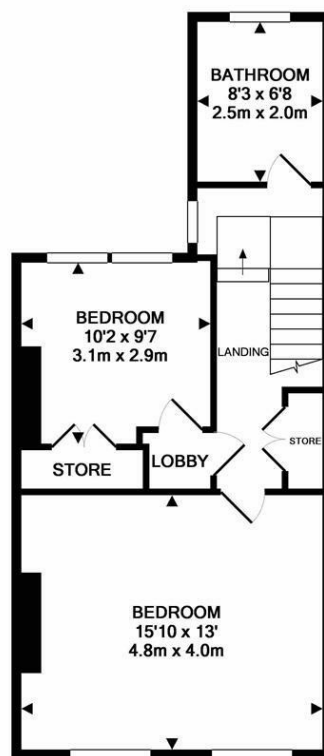
This great Victorian mid-terrace is packed with period features, enjoys a private south facing courtyard and is tucked away on Springbank Road, Sandyford. Springbank Road, close to Jesmond Dene, is also close to the local shops, cafes and restaurants and indeed the cafe culture, nightlife of Jesmond and Newcastle City Centre which are both also only a short walk away.

The accommodation briefly comprises: entrance lobby through to entrance hall which is open to dining room with stairs to the first floor; lounge with walk-in bay and period fireplace; dining room again with period fireplace and stripped wooden floors open to kitchen; sun room with access to rear yard. The first floor boasts an impressive full-width master bedroom, second bedroom with access to boarded loft storage and fitted store cupboard; stylish bathroom. Externally the property benefits from a town garden to front and a south facing courtyard to the rear with decked seating area and paved patios with access to the rear service lane. With stripped wooden flooring, a wealth of period charm and a delightful south-backing courtyard, this great period home demands an early inspection!

Victorian Mid Terrace | Two Bedrooms | 989 Sq Ft (91.8 m2) | Lounge | Dining Room | Kitchen | Impressive Full-Width Master Bedroom | Stylish Bathroom | South Facing Courtyard | Great Location | Period Features | Boarded Loft Storage | Sun Room | GCH | Freehold | Council Tax Band A | EPC Rating: D



GROUND FLOOR
APPROX. FLOOR
AREA 541 SQ.FT.
(50.3 SQ.M.)



1ST FLOOR
APPROX. FLOOR
AREA 448 SQ.FT.
(41.6 SQ.M.)

TOTAL APPROX. FLOOR AREA 989 SQ.FT. (91.8 SQ.M.)

Whilst every attempt has been made to ensure the accuracy of the floor plan contained here, measurements of doors, windows, rooms and any other items are approximate and no responsibility is taken for any error, omission, or mis-statement. This plan is for illustrative purposes only and should be used as such by any prospective purchaser. The services, systems and appliances shown have not been tested and no guarantee as to their operability or efficiency can be given.
Made with Metropix ©2018



Offers Over £225,000

IMPORTANT NOTE: These particulars and the descriptions and measurements herein do not constitute representation and whilst every effort has been made to ensure accuracy, this cannot be guaranteed.

